

Clydesdale and Cleveland Tower Blocks, *Birmingham*

## CONTRACT VALUE

£2.04m  
( £1.02m per tower block)

## BUILDING

Clydesdale & Cleveland  
Tower Blocks

## PROJECT DURATION

Sept 2022 – March 2023

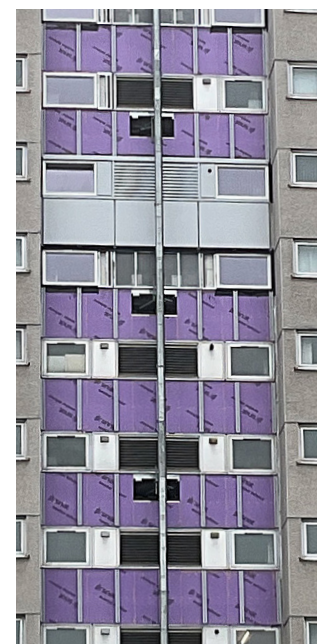
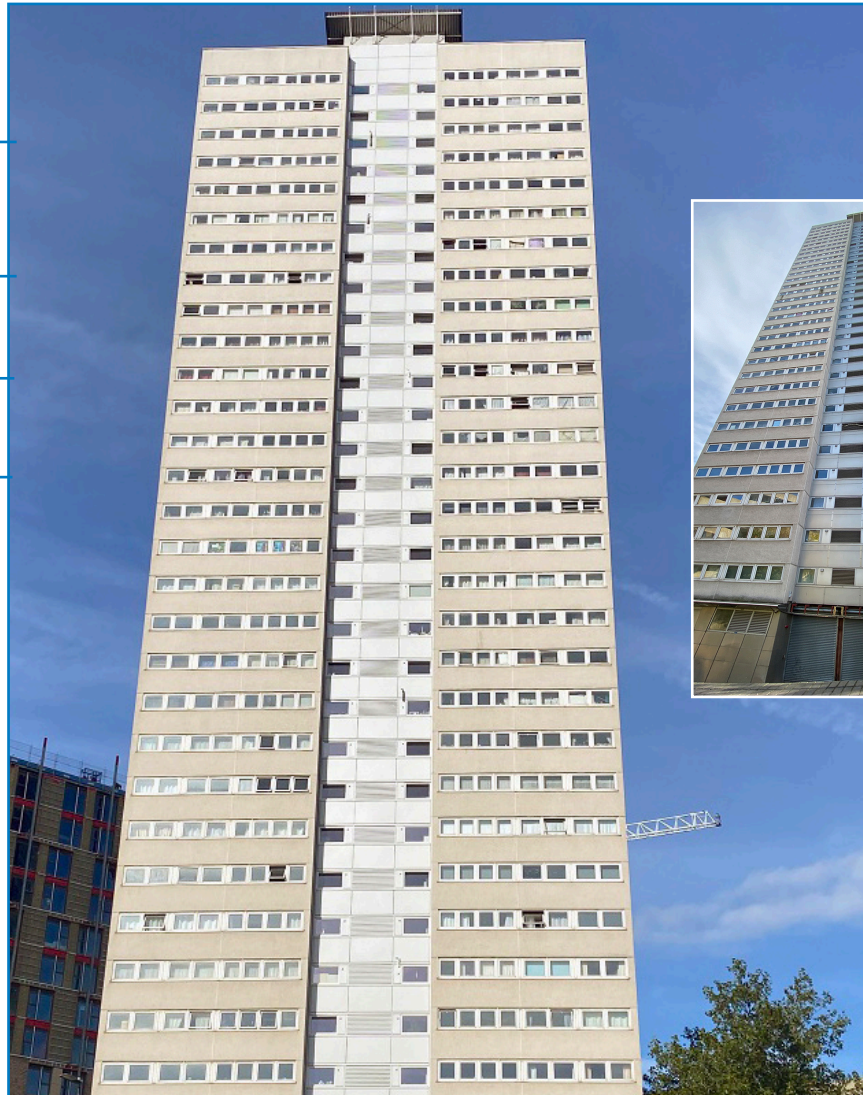
## CLIENT

Citizen Housing Group

## PROJECT SCOPE

The Sentinels comprising Cleveland and Clydesdale Towers are two 90-metre-tall residential tower blocks on Holloway Head in Birmingham. Owned by Citizen Housing, the 31 storey blocks were built in 1972. Work includes replacement panels to the inshots of both tower blocks using design build facades' solid aluminium rainscreen cassette system, insulation and cavity barriers. Additional works included window and louvre replacement to the same areas.

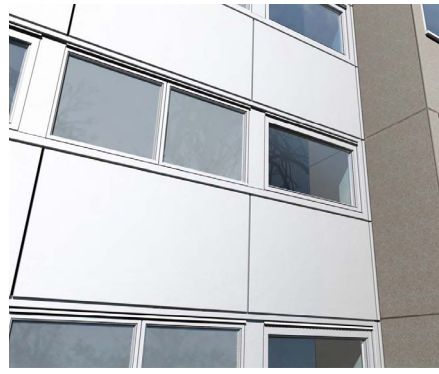
A mock-up was installed to demonstrate how the building would look once completed.



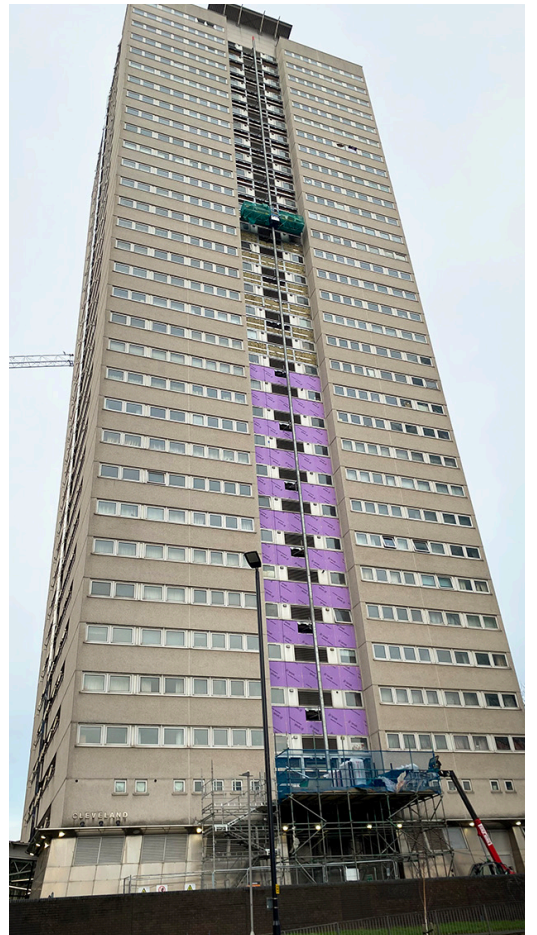




Facade before



Architectural CGI



### KEY OUTCOMES

Blocks made Fire Safe

New High performance windows installed to communal landings